

DOSIER

IMPLEMENTACIÓN



WEB TKROM PINTURAS

- Find out about all our promotions and new products
- Easily access all the technical documentation
- Consult related products
- Ask our experts directly
- Locate the nearest points of sale
- And many more things.



“Live an authentic online experience”

Visit us at
tkrom.com

PREVENTION IS ALWAYS THE BEST SOLUTION

When there is a problem resulting from incorrect waterproofing of a roof or deck, the damage caused is most likely to be serious or very serious.

In the following guide we will show you step by step everything you need to know to identify which of the different waterproofing systems available in the tkrom group is suitable for each project.

That is why we want to help you become a real expert by analysing the essential points when tackling any waterproofing project:

1. Type of roof
2. Waterproofing systems
3. Colour
4. Warranty
5. Step by step

“ When a problem is discovered as a result of water seeping through the roof, the damage is probably already very serious. This is why it is so important to maintain and check the condition of our roofs.

”





WHAT IS THE COVERED TO BE PROTECTED LIKE?

Not all roofs are the same, so depending on the state of the substrate, the type of roof and the use to which it is going to be put, we will use one system or another for its repair and tuning, in order to receive the possible arrival of the rains with the greatest peace of mind.

SUBSTRATE:

- Concrete.
- Mortar.
- Asphaltic membranes.
- Metal.
- Wood.
- Old Acrylic Paints.
- Old Polyurethane Membranes.

STATUS:

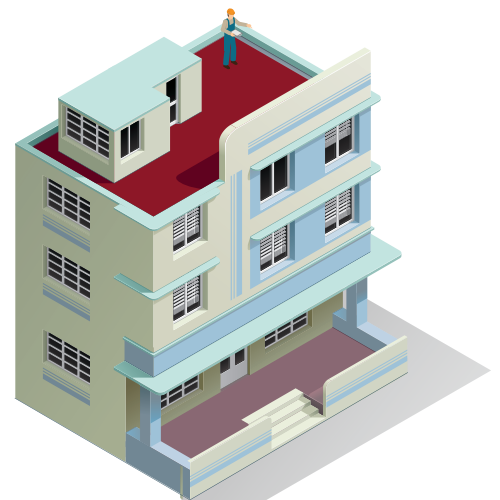
- Existence of mould and verdigris.
- Cracks.
- Leaks.
- Degradation and poor adhesion of the old products or support.



**NON-TRAFFICABLE
ROOF**



**COVER
TRANSITABLE
MODERATE**



**COVER
TRAFFICABLE
INTENSIVE**

It is necessary to differentiate between roofs depending on the level of traffic that is carried out on them. The roofs of **moderate use** or sporadic traffic, are basically used for maintenance work and repair of air conditioners or communication antennas.

If the use of the roof incorporates elements of comfort, such as outdoor furniture (tables, chairs, sun loungers, etc...), it will be a **roof for intensive use**.



WATERPROOFING SYSTEMS

NO COVER CAN RESIST US

We offer you different types of waterproofing products depending on the nature of the products to be applied, with solutions available with 1 and 2 component acrylic resins.

These products can be applied independently, or form part of an application system in which more products are used, thus increasing the durability of the system up to a maximum of 15 years of waterproofing.

Water-based products

These liquid coatings based on water-based resins (acrylic and polyurethane), form a hydrophobic membrane with no possible joints or leaks, **100% waterproof**, which efficiently protects new and old structures for a long period of time.

- TKROM Roofing / Fibre
- TKROM Anti-drip / Fibre / 2C



“The more demanding the waterproofing project, the more complete the system to be applied.”

”

ACRYLIC ELASTIC SYSTEMS

Asphalt-free waterproof coatings based on self-crosslinking acrylic emulsions, which, when dry, provide a continuous thick layer coating, preventing any water seepage on the protected surfaces.

The acrylic waterproofing systems are composed of the following elements:

- Fixative (recommended).
- Waterproofing fleece (recommended).
- Acrylic coating.

The main qualities and characteristics of acrylic elastic waterproofing systems are:

- Extraordinary flexibility and tensile strength.
- Adaptation to any type of irregularities.
- Perfectly withstands the expansions and contractions of the treated surface.
- Self-crosslinking by ultraviolet radiation.
- High resistance to soiling.





COLOR RANGE

ACRYLIC ELASTIC SYSTEMS

If the color you need is different from those we have in stock, don't worry, we can make the color that best suits your project, tell us what it is and we will take care of the rest.

- 1 WHITE
- 2 RED
- 3 ROOF TILE RED
- 4 GREEN
- 5 GREY



The colors shown are indicative and may show variations in tone based on the support on which it is applied.



TKROM GUARANTEES WATERPROOFING

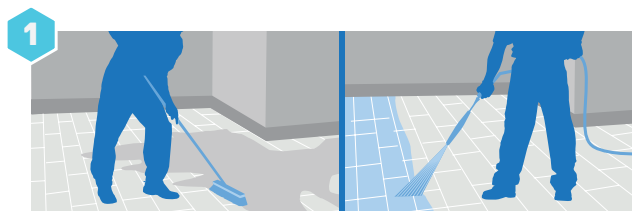
ACRYLIC ELASTIC SYSTEMS GUARANTEE

GUARANTEE	PRODUCT	LAYER	CONSUPTION	MICRONS
15 years	TKROM ANTIGOTERAS 2C	2	1,12 l/m ²	800
15 years	TKROM ANTIGOTERAS (With or without fiber)	2	1,66 l/m ²	900
10 years	TKROM CUBIERTAS (With or without fiber)	2	1,90 l/m ²	900

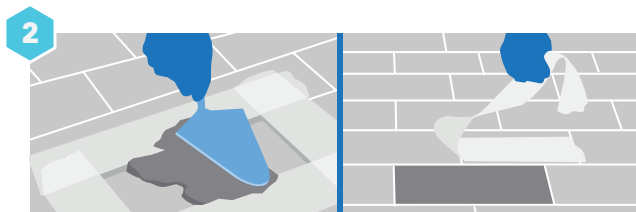


STEP BY STEP

ACRYLIC SYSTEM



Cleaning of the entire area with **pressurised water and hydrochloric acid** dissolved in water.



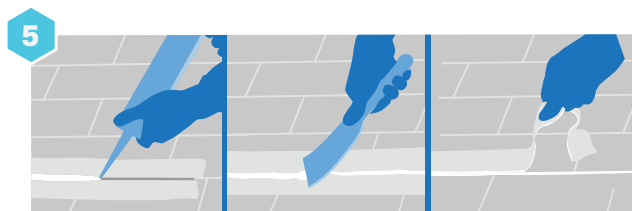
Repairing deteriorated areas with mortar **TKROMPLAST EXTERIOR-152**.



Half-round realisation with **tkrom ANTIGOTERAS o tkrom CUBIERTAS** and quartz sand of 0,4mm.



Gully reinforcement with **glass fibre mesh for terraces 60gr/m2**



Repair of joints with **polyurethane putty**.



Reinforcement of corners, corners and terrace parapets with **60gr/m2 glass fibre mesh for terraces**.



Terrace side reinforcement with **glass fibre mesh for terraces 60gr/m2**



tkrom ANTIGOTERAS o tkrom CUBIERTAS + glass fibre mesh for terraces 60gr/m2



tkrom ANTIGOTERAS FIBRA o tkrom CUBIERTAS FIBRA.



tkrom®

CUBIERTAS
IMPERMEABILIZANTE
CAPA GRUESA

- IMPERMEABILIDAD TOTAL
- GRAN ELASTICIDAD
- NO CUARTEA

ROJO

TK 200000000

tkrom®

GARANTÍA
15
AÑOS

ANTIGOTERAS
IMPERMEABILIZANTE
CAPA GRUESA

- IMPERMEABILIDAD TOTAL
- CUBRE PEQUEÑAS FISURAS
- TRANSITABLE**

ROJO

TK 200000000

EXTRAORDINARIA
FLEXIBILIDAD

2 ZONAS DE PASEO
MODERADO

CON
IMPERMEABILIDAD



“ No matter how demanding the roof to be waterproofed is, in the tkrom group we have solutions adapted to each project. ”

CUBIERTAS



Waterproof coating free of asphalts based on a self-crosslinking acrylic emulsion, which when dry provides a continuous coating, with a thick layer, which avoids any water filtration on the surfaces protected with it. It allows it to adapt to any type of irregularities, supporting its flexibility and resistance perfectly the expansions and contractions of the treated surface.

USES: Exterior. Terraces, roofs, roof terraces, party walls.

COLOURS: White. Black. Red. Tile red. Green. Grey. Colours according to sample

YIELD: 1,5m²/l

APPLICATION: Brush, roller and spray

FINISH: Matt.

DATA SHEET: TDS 204

• **FORMAT:** 15L, 4L

EXTERIOR



RESIN



WASHABLE



DRYING/
REPAINTING



HANDS



DILUTION



CUBIERTAS FIBRA DE VIDRIO



Asphalt-free waterproof coating based on a self-crosslinking acrylic emulsion, which, when dry, provides a continuous, thick layer coating that prevents any water filtration on the surfaces it protects. It allows it to adapt to any type of irregularities, supporting its flexibility and resistance perfectly the expansions and contractions of the treated surface.

USES: Exterior. Terraces, roofs, roof terraces, party walls.

COLOURS: White. Grey. Red*. Colours according to sample.

YIELD: 1,5m²/l

APPLICATION: Brush, roller and spray

FINISHING: Matt.

TECHNICAL DATA SHEET: TDS 205

• **FORMAT:** 15L, 4L*

EXTERIOR



RESIN



WASHABLE



DRYING/
REPAINTING



HANDS



DILUTION



IMPERMEABILIZANTE ACRILICO INCOLORO



Colourless waterproof coating free of asphalts, based on a pure and elastic self-crosslinking acrylic emulsion, which when dry provides a continuous coating, with a thick layer, which prevents any water filtration on the surfaces protected with it. Its high flexibility and tensile strength allows it to adapt to any type of irregularities, perfectly withstanding the expansions and contractions of the treated surface. Due to its cross-linking by ultraviolet radiation, it is highly resistant to soiling.

USES: Exterior. Terraces, roofs, flat roofs, party walls.

COLOURS: Colourless.

COVERAGE: 1,5m²/l

APPLICATION: Brush, roller and spray

FINISHING: Semi-matt.

DATA SHEET: TDS 239

• **FORMAT:** 15L, 4L

EXTERIOR



RESIN



WASHABLE



DRYING/
REPAINTING



HANDS



DILUTION



ANTIGOTERAS



Asphalt-free waterproof coating based on a self-crosslinking acrylic emulsion, which, when dry, provides a continuous, thick layer coating that prevents any water seepage on surfaces. TKROM ANTIGOTERAS is the ideal product to prevent water seepage, especially on horizontal surfaces.

USES: Exterior. Terraces, roofs, roof terraces, party walls.

COLOURS: White. Black. Red. Tile red. Green. Grey. Colours according to sample

YIELD: 1,5m²/l

APPLICATION: Brush, roller and spray

FINISHING: Semi-matt.

DATA SHEET: TDS 201

• **FORMAT:** 15L, 4L, 1L

EXTERIOR



RESIN



WASHABLE



DRYING/
REPAINTING



HANDS



DILUTION



ANTIGOTERAS FIBRA DE VIDRIO



Asphalt-free waterproof coating based on a self-crosslinking acrylic emulsion, which, when dry, provides a continuous, thick layer coating that prevents any water filtration. Its extraordinary flexibility and resistance to traction allows it to adapt to any type of irregularities, perfectly supporting the expansions and contractions of the treated surface. High resistance to soiling.

USES: Exterior. Terraces, roofs, roof terraces, party walls.

COLOURS: White. Red. Tile red. Grey. Colours according to sample

YIELD: 1,5m²/l

APPLICATION: Brush, roller and spray

FINISHING: Semi-matt.

TECHNICAL DATA SHEET: TDS 203

• **FORMAT:** 15L, 4L

EXTERIOR



RESIN



WASHABLE



DRYING/
REPAINTING



HANDS



DILUTION



ANTIGOTERAS 2C



Two-component waterproofing agent to be mixed at the time of application. Formulated with acrylic copolymers plus Portland cement. When dry it provides a continuous, thick film coating that prevents any water seepage onto surfaces protected with this product.

USES: Exterior. Terraces, roofs, roof terraces, party walls.

COLOURS: White. Grey. Colours according to sample

YIELD: 1,5m²/l

APPLICATION: Brush, roller and spray

FINISHING: Semi-matt.

TECHNICAL DATA SHEET: TDS 202

• **FORMAT:** 20kg

EXTERIOR



RESIN



WASHABLE



DRYING/
REPAINTING



HANDS



DILUTION



COMPARATIVE **WATERPROOFING SYSTEMS**

	PINTABILITY	ELASTICITY	COMPLEXITY OF IMPLEMENTATION	STANDING WATER (RESISTANCE)	TRANSITABLE
CUBIERTAS	VERY GOOD	VERY GOOD	VERY EASY	BAJA	MODERATE USE
CUBIERTAS FIBRA	VERY GOOD	VERY GOOD	VERY EASY	BAJA	MODERATE USE
ANTIGOTERAS	VERY GOOD	EXCELLENT	VERY EASY	BAJA	MODERATE USE
ANTIGOTERAS FIBRA	VERY GOOD	EXCELLENT	VERY EASY	BAJA	MODERATE USE
ANTIGOTERAS 2C	VERY GOOD	EXCELLENT	VERY EASY	BAJA	HATED USE



ANTIGOTERAS

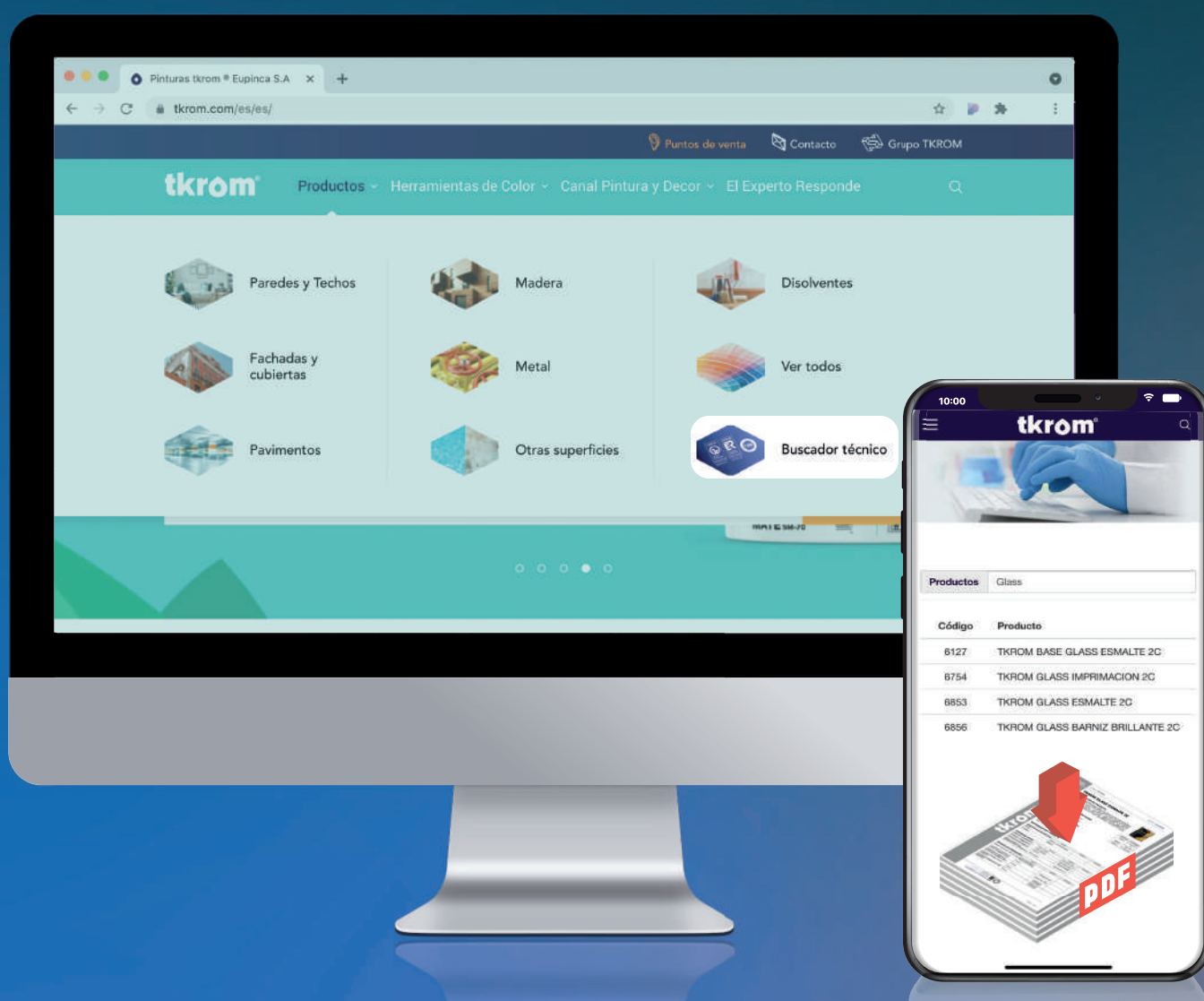
SING WITHOUT FEAR TO BE RAINED ON

PREVENT WATER SEEPAGE
WITH THE ELASTIC THICK
LAYER WATERPROOFING AND
ENJOY THE THINGS
THAT REALLY MAKE YOU
HAPPY.



ALL THE TECHNICAL AND SAFETY DATA SHEETS CLICK

Find the technical data sheets of our products from the technical search engine on tkrom.com.

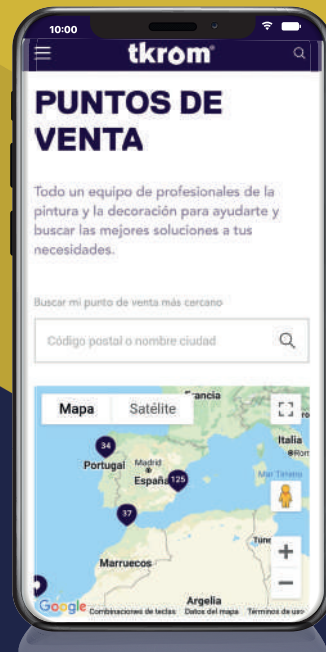


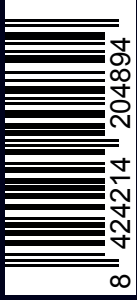
SALES POINTS

A whole team of painting and decoration professionals to help you and look for the best solutions.



Scan the QR code and enter our search engine to find your nearest retailer.





Issue February 2024



C/Londres, 13
Pol. Industrial Cabezo Beaza
30353 Cartagena, Murcia
T: +34 968 089000

tkrom.com



grupo
tkrom